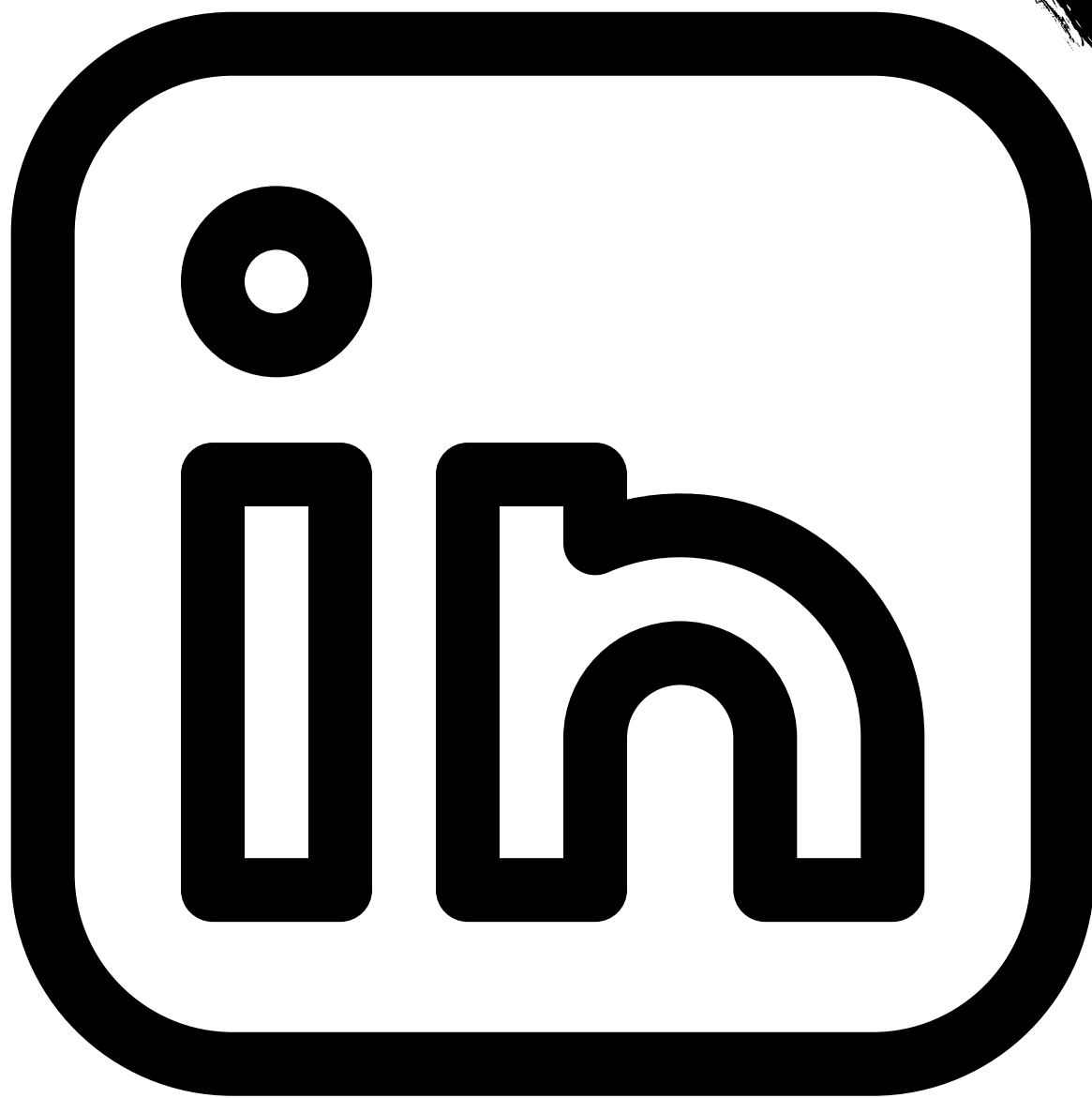


13

LinkedIn

Accounts I Love



Joni Watson

96% OF PEOPLE FEEL THEY'RE
NOT LIVING UP TO THEIR FULL POTENTIAL.
BE THE 4%.

Learn more at JonAcuff.com



Jon Acuff · 2nd

CEO of Acuff Ideas | 📖 NYT Bestselling Author | 🎧 INC Top 100 Leadership Speaker | 🎙️ All It Takes Is A Goal Podcast

JON ACUFF

Acuff Ideas, LLC



Samford University



Jon Acuff

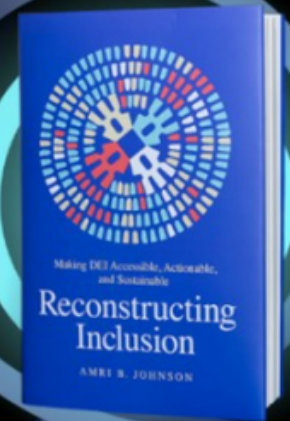
RECONSTRUCTING INCLUSION



Amri B. Johnson



Scan me



Amri B. Johnson (We, he/him) · 2nd

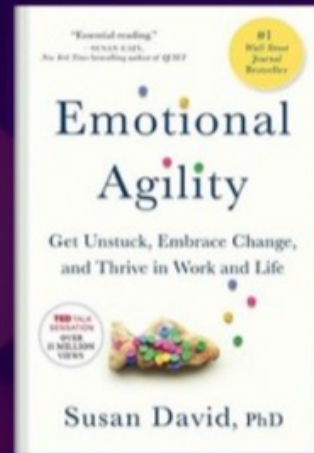
Inclusion Strategist | Extraordinary Keynoter | Author, *Reconstructing Inclusion: Making DEI Accessible, Actionable, and Sustainable: Check it out! | Creating cultures from the hearts of individuals | #ChooseHumanity*



Inclusion Wins



Amri Johnson



#1 Wall Street Journal
Bestseller

“Incredible book.”

—Brené Brown

Bestselling author of *Atlas of the Heart* and *Dare to Lead*



Susan David, Ph.D. · 2nd

Psychologist. Harvard Medical School. TED Speaker. Author of the #1 WSJ bestseller *Emotional Agility*. Co-Founder of Institute of Coaching.

TED TED Conferences

Y Yale University



Susan David

Trusted by:

accenture

CISCO

PayPal

Coca-Cola

L'ORÉAL
PARIS

NASA



David Hutchens  · 1st

I help the world's most influential strategy, culture, and innovation leaders tell captivating stories and exercise a more "humanized" voice of influence. What are the strategic stories you need to tell?



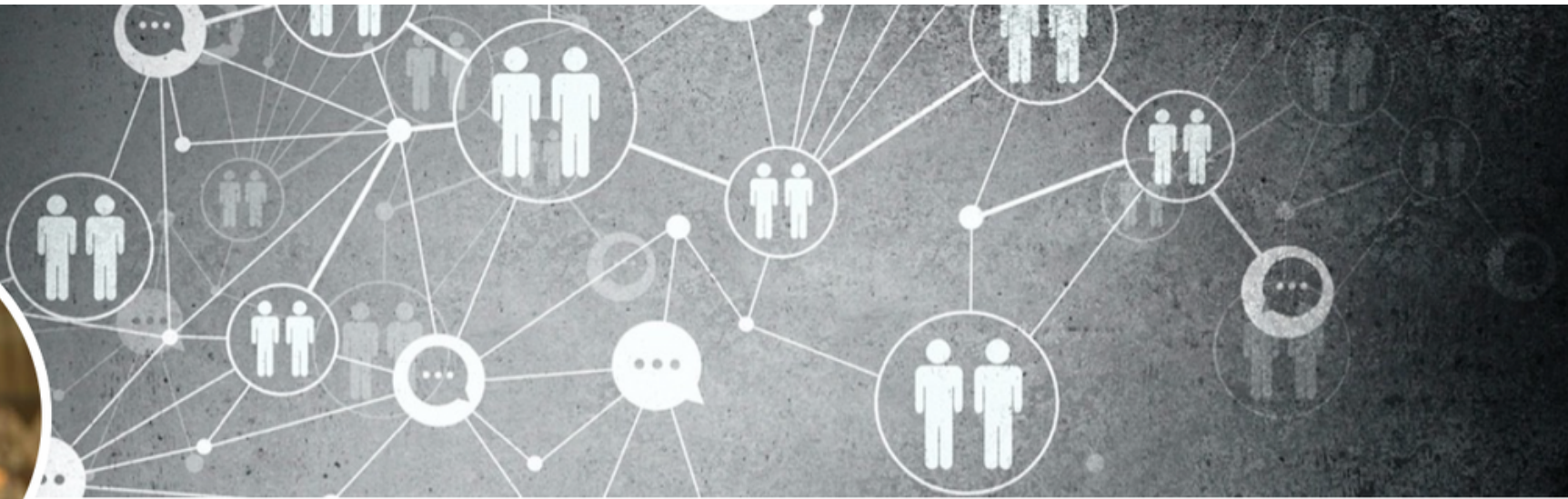
The Storytelling Leader



The University of Texas at
Austin



David Hutchens



Starling David Hunter III  · 1st

MBA, PhD (Duke/Fuqua); ex-Faculty (MIT/Sloan, Carnegie Mellon/Tepper)



Organalytic AB



Duke University - The Fuqua School of Business



Starling David Hunter III



Eric Bricker, MD · 2nd
Medical Director SimplePay Health



University of Illinois College
of Medicine



Eric Bricker

2023 BUSINESS BOOK OF THE YEAR

FT FINANCIAL TIMES

Schroders

In partnership with
NIKKEI



Available at bookstores worldwide and on www.simonandschuster.com



Amy Edmondson (She/Her) · 2nd

Prof @ Harvard Business School; Author of "Right Kind of Wrong: The Science of Failing Well"

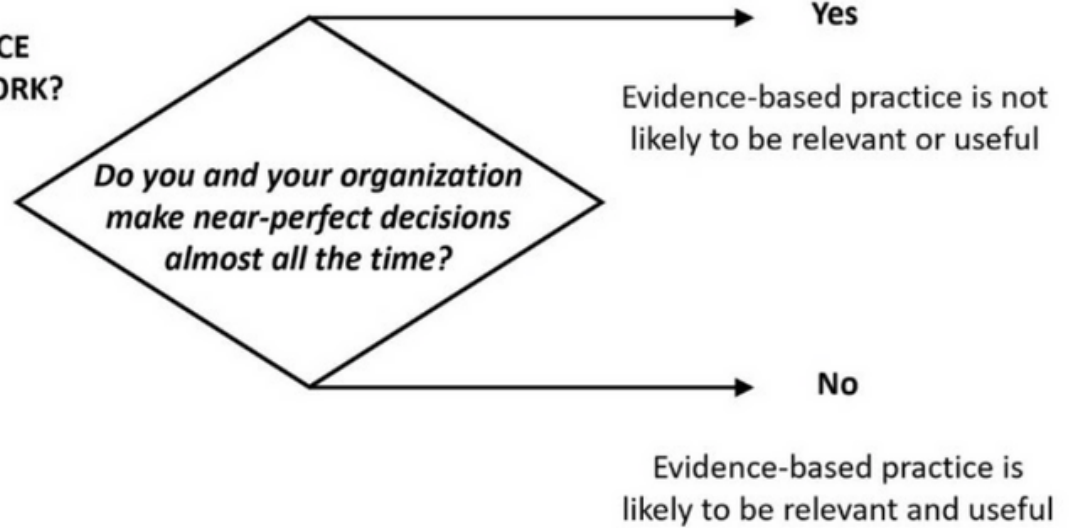


Harvard University



Amy Edmondson

IS EVIDENCE-BASED PRACTICE
RELEVANT TO ME AND MY WORK?



Rob Briner  · 1st

Prof of Organizational Psychology, Queen Mary Uni of London;
Visiting Prof, Birkbeck Uni of London; Prof, Oslo Nye Høyskole;
Cofounder & Ex-Scientific Director CEBMa; Associate Director
Research, Corporate Research Forum



Queen Mary University of
London



Rob Briner



Jeremy Connell-Waite ✓ (He/Him) · 2nd
Global Communications Designer | Design Principal |
BetterStories.org 🐝🐝🐝

IBM IBM




Jeremy Connell-Waite



Joss Colchester · 2nd

Ecosystem Building at Systems Innovation Network

 **Systems Innovation**



Joss Colchester



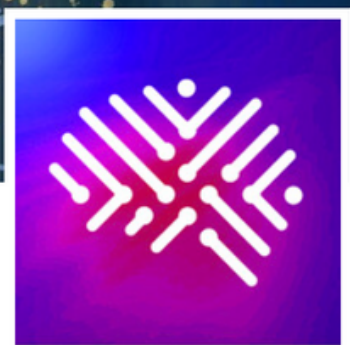
Jeffrey Pfeffer  · 2nd
Ph.D. at Stanford University



Stanford University



Jeffrey Pfeffer

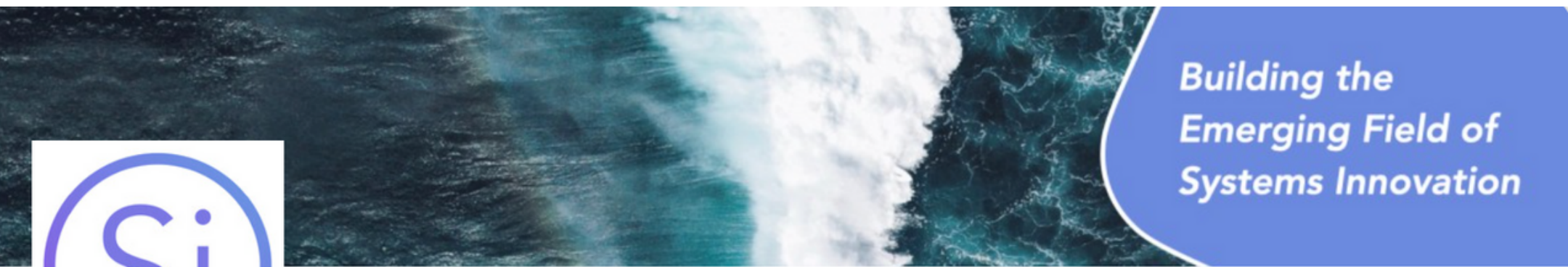


The Decision Lab

Behavioral Science, Applied.



The Decision Lab



*Building the
Emerging Field of
Systems Innovation*



Systems Innovation

We're working on building the new field of systems innovation as a pathway towards transformative change



Systems Innovation